

New Student  
**ORIENTATION  
PROGRAM**

---

SPRING 2021

# WELCOME FROM THE CHANCELLOR

---

We are so excited to welcome you to the community of Embry-Riddle Aeronautical University! Whether you are a new student, returning student, veteran, or transfer student, our faculty and staff are here to assist and support you in achieving your goals.

We work diligently to provide the support to assist you in completing your academic degree, and developing professionally and socially. This process takes a team effort from the staff, faculty, students and you.

We are confident that the programs and educational opportunities in which you participate during this academic year will provide valuable experiences. We also hope these lifelong learning experiences will encourage you to continue your involvement well into your professional life as alumni of Embry-Riddle.

We encourage you to take advantage of the many student organizations and professional opportunities available on campus. These co-curricular opportunities, including professional, academic, community service and recreational activities, will enhance your college experience. Through association with students of similar interests, lifelong friendships are developed and relationships that support future employment opportunities are forged. And do not underestimate the power of networking opportunities with other students — who will soon be colleagues in their professional careers. These activities will aid in your personal, physical, spiritual, social, emotional and career growth. Studies show that through campus involvement, students are more apt to stay in school — retention is higher for involved students — and improve chances of finding an exciting position they seek in industry.

On behalf of all of us at Embry-Riddle Prescott, welcome!  
We look forward to being involved in this wonderful new chapter in your life!



Sincerely,

A handwritten signature in white ink that reads "Anette M. Karlsson". The signature is fluid and cursive.

Anette M. Karlsson, Ph.D.  
Chancellor  
Prescott Arizona Campus

# NEW STUDENT ORIENTATION - UNDERGRADUATE

*Your college experience is about to begin! Orientation is your first opportunity to become a part of the campus community, meet your future classmates and colleagues, and create lifelong friendships.*

## SPRING 2021 UNDERGRADUATE ORIENTATION SCHEDULE

### TUESDAY, JANUARY 19TH

- > 9:30-10:00 AM- Check-in outside of the Student Union Lower Hangar (Building 16)
- > 10:00 AM-12:00 PM Orientation Small Group
- > 12:00 PM- Lunch in your Small Group
- > 12:45-1:30 PM- Small Group continues
- > 1:30-3:00 PM- College Meetings
- > 3:00-5:00 PM- Take care of any needed on-campus business

### STUDENT ORIENTATION LEADERS

A team of current student leaders will be on campus during Orientation to help guide you through your first days at Embry-Riddle. New students will be placed together in groups led by an Orientation Leader.

### PARENT AND FAMILY ORIENTATION

We are not able to offer in-person orientation activities for parents and families. However, a robust online Orientation for parents and family members can be found at [www.parentlingo.com/erau](http://www.parentlingo.com/erau).

### STAYING HYDRATED

It's important to realize when you arrive in Prescott, Arizona that your body will demand more water than what you might be used to. Between the low humidity, and mile-high altitude, new arrivals can become dehydrated quickly. Especially on move-in day, as you are running back and forth between your vehicle and your residence hall room, be sure to take time to stop and drink plenty of water. Watch for signs of dehydration including fatigue, dizziness, headache, and nausea. Adopt the Arizona lifestyle of carrying a water bottle with you everywhere you go. Drinking fountains with bottle filling stations are located throughout campus.

# GRADUATE STUDENT INFORMATION

## REGISTRATION

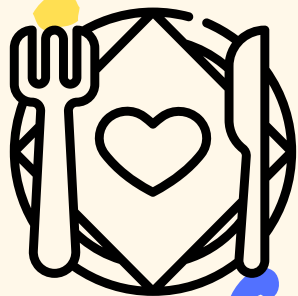
Registration begins with reviewing your college's Graduate Registration Guide, located in ERNIE under the Services tab. Look for the registration guide under the header for your college.

Please note: If you have been admitted provisionally, you will not be able to register for classes until we have received your official final transcript showing completion of a bachelor's degree. Please send your official transcripts as soon as possible to allow you to register for classes.

If you need assistance, the academic advisors are available Monday-Friday, 8:00am-5:00pm MST (not MDT). You may call toll free 1.800.888.3728 and ask to be transferred to the academic advisor for your college, or refer to your College Registration Guide in ERNIE for direct contact information.

# DINING HOURS

	<b>Earhart's Dining Hall</b>	<b>WOW Café</b> <i>Located in the Student Union</i>	<b>Scholars Café</b> <i>Serving Starbucks; Located in the Library</i>	<b>Simply-to-go</b> <i>Convenience store located in Hall 9</i>	<b>Eagles Café</b> <i>Located at Flight Line</i>
<b>Saturday, August 15</b>	8 a.m. - 8 p.m.	10 a.m. - 5 p.m.	10 p.m. - 4 p.m.	12 p.m. - 5 p.m.	Closed
<b>Sunday, August 16</b>	8 a.m. - 8 p.m.	12 p.m. - 5 p.m.	10 p.m. - 4 p.m.	2 p.m. - 12 a.m.	Closed
<b>Monday, August 17</b>	8 a.m. - 8 p.m.	10 a.m. - 5 p.m.	8 a.m. - 4 p.m.	12 p.m. - 5 p.m.	10 a.m. - 2 p.m.
<b>Tuesday, August 18</b>	8 a.m. - 8 p.m.	10 a.m. - 5 p.m.	8 a.m. - 4 p.m.	12 p.m. - 5 p.m.	10 a.m. - 2 p.m.
<b>Wednesday, August 19</b>	8 a.m. - 8 p.m.	10 a.m. - 5 p.m.	8 a.m. - 4 p.m.	12 p.m. - 5 p.m.	10 a.m. - 2 p.m.
<b>Thursday, August 20</b>	8 a.m. - 8 p.m.	10 a.m. - 5 p.m.	8 a.m. - 4 p.m.	12 p.m. - 5 p.m.	10 a.m. - 2 p.m.
<b>Friday, August 21</b>	8 a.m. - 8 p.m.	10 a.m. - 5 p.m.	8 a.m. - 4 p.m.	12 p.m. - 5 p.m.	10 a.m. - 2 p.m.
<b>Saturday, August 22</b>	8 a.m. - 8 p.m.	10 a.m. - 5 p.m.	10 p.m. - 4 p.m.	12 p.m. - 5 p.m.	Closed
<b>Sunday, August 23</b>	8 a.m. - 8 p.m.	12 p.m. - 5 p.m.	10 p.m. - 4 p.m.	2 p.m. - 12 a.m.	Closed



## WELCOME MEAL

Redeem for a complimentary meal at Earhart's or Amelia's- anytime Wednesday, January 20th, 2021

**COURTESY OF ORIENTATION**  
SODEXO DINING

**SPRING ORIENTATION 2021**  
COMPLIMENTARY MEAL TICKET

CHARGE TO 42440

**MUST BE REDEEMED ON 1/20/2021**

MEAL REDEEMED:

# NEW STUDENT CHECKLIST

*Some of these items also appear on the "To Do" list in your ERNIE Student Homepage.*

- Set up your ERNIE account at [ernie.erau.edu](http://ernie.erau.edu). Click on Activate Your Account and follow the prompts.
- Submit housing security deposit of \$300 at [erau.edu/deposit](http://erau.edu/deposit) and complete housing application found at [prhousing.erau.edu](http://prhousing.erau.edu) (see pg. 8).
- Take the ALEKS math assessment and register for classes (see pg. 11).
- Submit an enrollment agreement through ERNIE. Under Forms and then Office of the Registrar, click the Enrollment Agreement link. Required by the State of Arizona. Must be submitted prior to the start of the term to avoid registration hold, housing check-in hold, Eagle Card hold, inability to pay bill and other holds.
- Submit a financial disclosure through your ERNIE Student Homepage>Tasks tile>To-Do List. Must be submitted within 60 days of class registration to avoid a registration hold.
- Have your official final high school transcript (must include graduation date) and/or official transcripts from all colleges previously attended mailed directly to the Embry-Riddle Admissions Office - Prescott Campus at 3700 Willow Creek Rd., Prescott, AZ 86301.
- All Flight Students – carefully review Aviation and Transportation Security Act (ATSA) information (see Pre-Flight Checklist, pg. 6-7). Original documents must be presented in person during Orientation. Non-U.S. citizens should note special instructions regarding ATSA.
- All Flight Students – obtain and bring FAA Medical Certificate (see Pre-Flight Checklist, pg. 6-7).
- Bring FAA certificates and log book (experienced flight students only).
- Complete Medical Report Form found at [prescott.erau.edu/about/health](http://prescott.erau.edu/about/health); provide proof of 2 measles, mumps and rubella immunizations, 3 Hepatitis B injections and a Meningococcal vaccine. Must be on file in Wellness Center prior to January 8 to avoid registration hold, housing check-in hold, Eagle Card hold, inability to pay bill and other holds.
- Health insurance is mandatory. If you have comparable health insurance and want to opt out of the University policy, you must complete the waiver through ERNIE between January 1 and August 15, 2021 or you will be charged the fee (see pg. 9).
- Register your vehicles (see pg. 10).
- Apply for your Eagle Card (student ID). Log on to your ERNIE account and click on Forms, then on the Apply for EAGLEcard link. You must include a photo in order for your card to be ready for pick-up at Orientation.
- Complete the online Pre-Orientation Guide. A link to the module will be emailed to you in December.
- For students under age 18 – parent/guardian must sign required consent forms for medical treatment, counseling services, and participation in student activities. Forms will be sent directly to the student via email prior to the start of the semester.
- Bring course outlines/syllabi for transfer courses, if previously requested.

# UTILIZING YOUR ERNIE STUDENT CENTER

---

ERNIE (Embry-Riddle Network for Information Exchange) is the campus online portal and your Student Homepage is the place to go to view your student account information and access online forms and processes. Sign in at [ernie.erau.edu](http://ernie.erau.edu) and then click on Campus Solutions Student Homepage.

## ENROLLMENT AGREEMENT

The State of Arizona requires each student to complete an Enrollment Agreement. You can navigate to this online form by logging into your ERNIE account, clicking on the Forms tab, scrolling down to the Office of the Registrar section and clicking on the Enrollment

Agreement link. If you will not be 18 years old by August 24, your legal guardian must also sign this document. For further information, please contact the Records Office at 928.777.3808.

## FINANCIAL DISCLOSURE

A Financial Disclosure must be completed electronically by all students. In the Student Homepage, select the Finances tile and click on the Complete Financial Disclosure link. Click on the Grant Permissions button and follow the steps.

## AUXILIARY ACCESS

Student information is protected by the Family Educational Rights and Privacy Act (FERPA) but students can allow parents or others to access their information by providing them with Auxiliary Access in our student information system. If you want your parent/others to be able to review your information or pay online on your student account you must set them up with Auxiliary Access.

To give parents or others access, click on Campus Solutions Student Homepage link in ERNIE, click the Profile tab and select Auxiliary Access. Follow the steps on the screen. You may add up to three users. Students set the PIN number and password to share with those given access. Those with access should be prepared to provide the PIN number when calling the University for information on your account. An email will be sent to the person you grant access to giving them the PIN and sign on information but it is up to you to inform your users of the password you have set up for them. Students may also remove users in this same process.

## STUDENT ACCOUNT

The University does not send out monthly statements. Students have the responsibility of reviewing their account online on a regular basis. In the Student Homepage click on the Finances tile and click on the link My Student Account.

## CLASS SCHEDULE

To view and print your class schedule, login to Campus Solutions. Navigate to Campus Community and then Student Services Center (Student). Type in your Student ID number and click Search. On the Student Center tab, click on My Class Schedule. Click on the printer link to print your schedule.



**To keep everyone on our campuses safe, the following precautions are mandatory:**

- /// Students must have a wellness check (no contact temperature check) every 24 hours**
- /// Everyone on campus must wear face coverings at all times, both indoors and outdoors, in all common areas.**
- /// Physical distancing (six feet apart) is mandatory at all times.**
- /// Practice rigorous hand hygiene and assist in regularly disinfecting high touch surfaces.**

**We ask everyone to wear face coverings, practice physical distancing, and maintain good hand hygiene both on and off-campus.**

#### **Health Reminders**

- /// If you are sick, or if you have been in close contact with someone with Covid 19, do not come onto Embry Riddle's campuses.**
- /// In case of difficulty breathing or chest pains, call 911.**
- /// Please promptly report any concerning symptoms (i.e., fever, cough or congestion) to the health services or campus safety.**



Wear a mask in all public areas, unless otherwise noted.



Wash your hands frequently.



Practice physical distancing at all times, on and off campus.

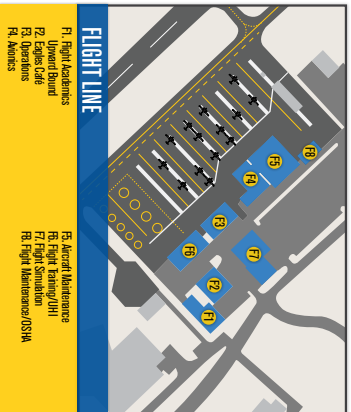


Stay home if you are sick.



**EMBRY RIDDLE**  
**Aeronautical University**  
 PRESCOTT, ARIZONA  
 3700 WILLOW CREEK ROAD  
 PRESCOTT, AZ 86301  
 928.777.6800  
 PRESCOTT@RAU.EDU

10/2008



**FLIGHT LINE**

F1 Flight Maintenance  
 F2 Flight Simulation  
 F3 Flight Operations  
 F4 Admins

F5 Aircraft Maintenance  
 F6 Flight Simulation  
 F7 Flight Simulation  
 F8 Flight Maintenance/ISSM

**CAMPUS BUILDINGS**

- Mary Jo Mountain Residence Halls:**
- 1. Rockwater Hall
  - 2. Quaker Hall
  - 3. Oak Hill
  - 4. Elk Hill
  - 5. Javelina Hill
- Wingco Residence Halls:**
- 6. Juniper Hall
  - 7. Marantha Hall
  - 8. Saguaro Hall
  - 9. The Oaks Hall
  - 10. Mariposa Hall
  - 11. Red Office/Aluminum
  - 12. Reynolds/Right side
  - 13. Costner/Edge Card
  - 14. Safety and Security
  - 15. The Village - Student Government
  - 16. Campus Activities
  - 17. Women's and Diversity Center
  - 18. WWU Cafe
  - 19. Gen A, Diversity Center to Security and Global Sensitivity and Intelligence
  - 20. Western Students Resource Center
  - 21. Student Arts & Engagement Center
  - 22. Data Learning Center Auditorium (DL2)
  - 23. Data Learning Center
  - 24. Data Learning Center
  - 25. Data Learning Center
  - 26. Data Learning Center
  - 27. Data Learning Center
  - 28. Data Learning Center
  - 29. Data Learning Center
  - 30. Data Learning Center
  - 31. Data Learning Center
  - 32. Data Learning Center
  - 33. Data Learning Center
  - 34. Data Learning Center
  - 35. Data Learning Center
  - 36. Data Learning Center
  - 37. Data Learning Center
  - 38. Data Learning Center
  - 39. Data Learning Center
  - 40. Data Learning Center
  - 41. Data Learning Center
  - 42. Data Learning Center
  - 43. Data Learning Center
  - 44. Data Learning Center
  - 45. Data Learning Center
  - 46. Data Learning Center
  - 47. Data Learning Center
  - 48. Data Learning Center
  - 49. Data Learning Center
  - 50. Data Learning Center
  - 51. Data Learning Center
  - 52. Data Learning Center
  - 53. Data Learning Center
  - 54. Data Learning Center
  - 55. Data Learning Center
  - 56. Data Learning Center
  - 57. Data Learning Center
  - 58. Data Learning Center
  - 59. Data Learning Center
  - 60. Data Learning Center
  - 61. Data Learning Center
  - 62. Data Learning Center
  - 63. Data Learning Center
  - 64. Data Learning Center
  - 65. Data Learning Center
  - 66. Data Learning Center
  - 67. Data Learning Center
  - 68. Data Learning Center
  - 69. Data Learning Center
  - 70. Data Learning Center
  - 71. Data Learning Center
  - 72. Data Learning Center
  - 73. Data Learning Center
  - 74. Data Learning Center
  - 75. Data Learning Center
  - 76. Data Learning Center
  - 77. Data Learning Center
  - 78. Data Learning Center
  - 79. Data Learning Center
  - 80. Data Learning Center
  - 81. Data Learning Center
  - 82. Data Learning Center
  - 83. Data Learning Center
  - 84. Data Learning Center
  - 85. Data Learning Center
  - 86. Data Learning Center
  - 87. Data Learning Center
  - 88. Data Learning Center
  - 89. Data Learning Center
  - 90. Data Learning Center
  - 91. Data Learning Center
  - 92. Data Learning Center
  - 93. Data Learning Center
  - 94. Data Learning Center
  - 95. Data Learning Center
  - 96. Data Learning Center
  - 97. Data Learning Center
  - 98. Data Learning Center
  - 99. Data Learning Center
  - 100. Data Learning Center
- PARKING LOTS**   **BUS STOPS**   **BUILDING NUMBER**