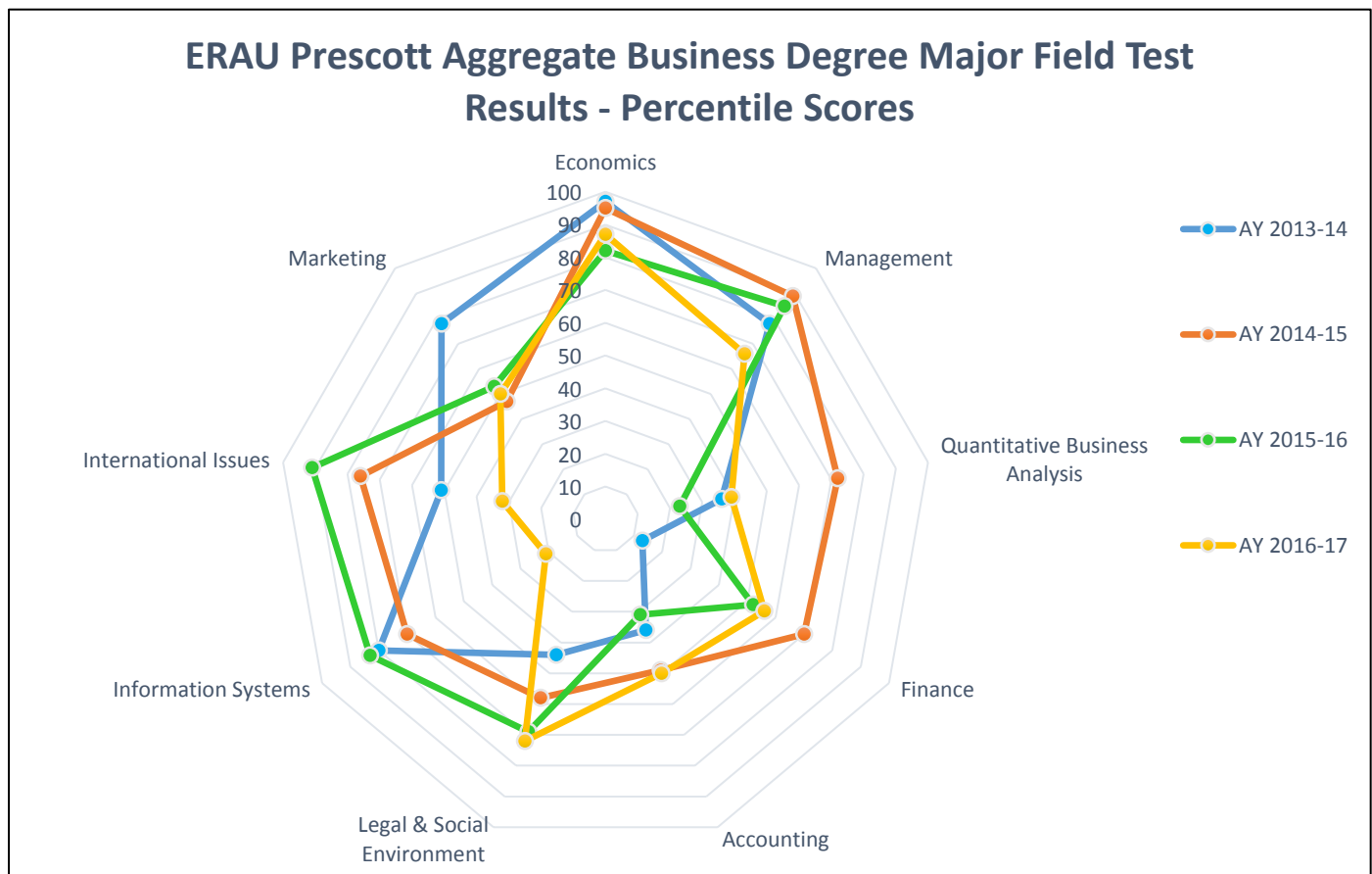


# EMBRY-RIDDLE AERONAUTICAL UNIVERSITY PRESCOTT, AZ

## AGGREGATE MAJOR FIELD TEST (MFT) RESULTS FOR BUSINESS STUDENTS IN ALL BUSINESS DEGREE PROGRAMS (2014 – 2017)

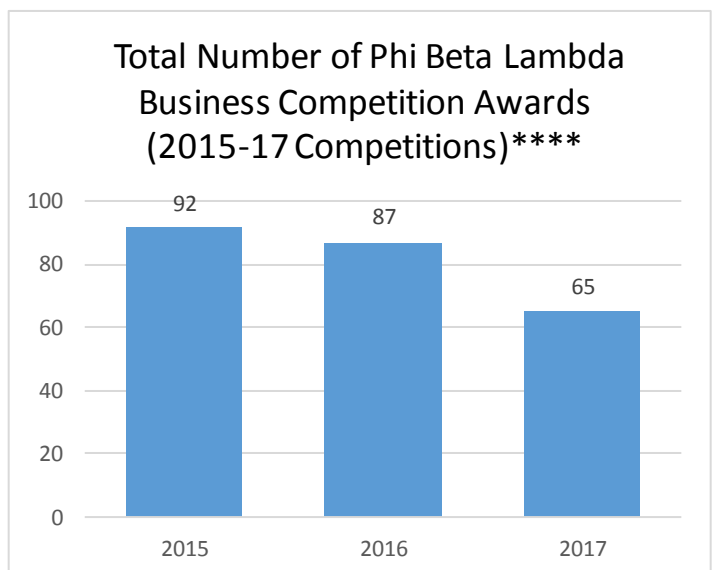
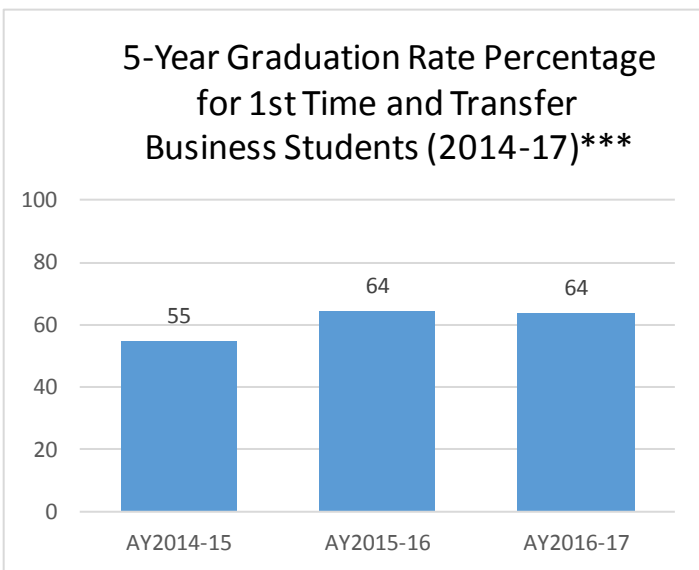
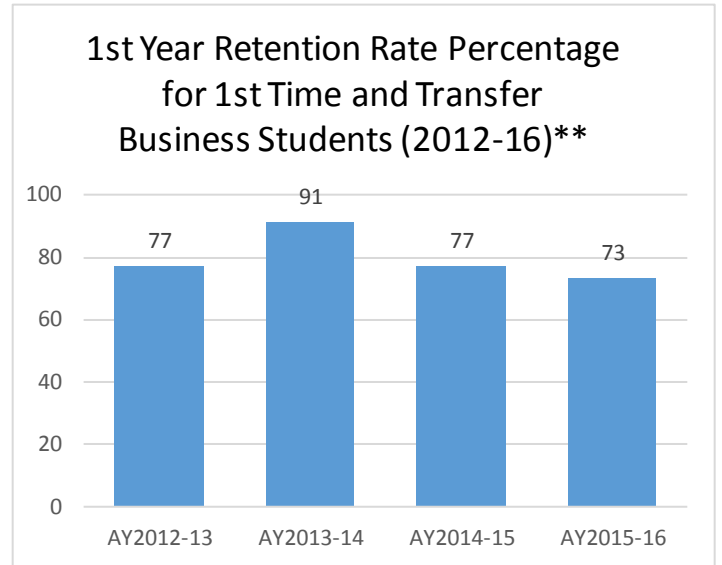
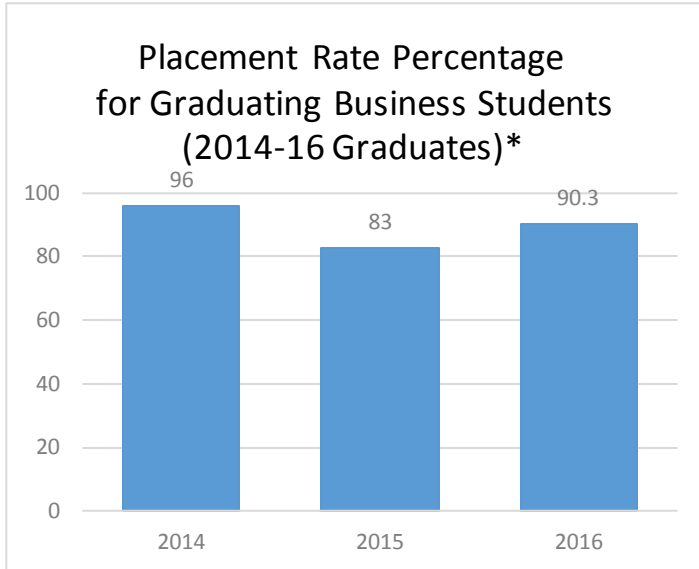
OVERALL RESULTS	AY 2013-14	AY 2014-15	AY 2015-16	AY 2016-17
ERAU Prescott Mean Score	153.3	155	153	152
National Institutional Mean	150.2	152.1	150.3	149.9
ERAU Prescott National Percentile Ranking	60	73	60	58

ERAU PRESCOTT vs. NATIONAL: PERCENTILE RANKING BY DISCIPLINE	ERAU Prescott AY 2013-14	ERAU Prescott AY 2014-15	ERAU Prescott AY 2015-16	ERAU Prescott AY 2016-17	National MFT Percentile 2016
Economics	97	95	82	87	41
Management	78	89	85	66	40
Quantitative Business Analysis	36	72	23	39	45
Finance	13	70	52	56	47
Marketing	78	47	53	50	45
Legal & Social Environment	44	58	69	72	42
Information Systems	80	70	83	21	45
International Issues	51	76	91	32	37
Accounting	36	49	31	50	39



# EMBRY-RIDDLE AERONAUTICAL UNIVERSITY – PRESCOTT

## BUSINESS STUDENT GRADUATION RATE, RETENTION RATE, PLACEMENT RATE, AND PHI BETA LAMBDA ARIZONA BUSINESS COMPETITION AWARD DATA



\* Reflects students in full-time employment or accepted to graduate school, achieved no later than one year from the date of degree completion.

\*\* The National Student Clearinghouse Research Center (May, 2016) reported that the first year persistence rate (retention at the same institution) for all US universities is 60.6%, with a rate of 75.5% for private institutions.

\*\*\* Calculated as the graduation date upon which students are degree-complete, within five years of entering ERAU-Prescott. (Includes several students with dual majors – which can extend the time to graduation.)

\*\*\*\* For the past 11 consecutive years, ERAU-Prescott has won the most total PBL State awards of any AZ university.